

The Neuropsychiatric Institute, POWH & the Centre for Healthy Brain Ageing (CHeBA) invite you to:

PREVENTION OF DEPRESSION

TYREE ROOM
SCIENTIA
BUILDING
UNSW

17 Sept 2015
1pm - 5pm

EARLY BIRD RATES
UNTIL 31 JULY:

Psychatrist - \$165
Trainee - \$110

Rates increase by \$55
after 31 July

[Click here to register](#)



KEYNOTE SPEAKER

Professor Charles Reynolds III M.D
2015 RANZCP Travelling Professor

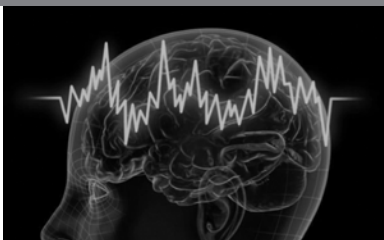
Key topics include:

- Depression prevention
- Prevention of suicide
- Prevention of late life depression
- Prevention of Bipolar disorder
- Novel approaches to young people
- Future directions for prevention

Speakers Include:

Professor Gavin Andrews
Professor Michael Berk
Professor Helen Christensen
Professor Philip Mitchell
Dr Yael Perry
Professor Jane Pirkis

Contact: cheba@unsw.edu.au



PROGRAM

VENUE LOCATION:

Tyree Room, John Niland Scientia Building, UNSW Australia
Entry via Gate 11 Botany Street, Kensington, NSW 2031

Prevention of Depression: Current Opinion

Thursday, 17th September: 1:00pm – 5:00pm

Session 1		Chair: Gavin Andrews
1:00 – 1:25 pm	Chair: Welcome & Introduction Setting the scene: Why prevention?	Gavin Andrews
1:25 – 1:50 pm	Novel approaches to the prevention of depression in young people	Yael Perry
1:50 – 2:15 pm	Can we prevent depression?	Michael Berk
2:15 – 2:40 pm	Prevention of bipolar disorder	Philip Mitchell
2:40 pm AFTERNOON TEA		
Session 2		Chair: Philip Mitchell
3:10 – 3:35 pm	eHealth for depression prevention	Helen Christensen
3:35 – 4:00 pm	Prevention of suicide	Jane Pirkis
4:00 – 4:30 pm	Keynote: Prevention of late life depression	Charles F. Reynolds III
4:30 – 5:00 pm	Panel discussion: Future directions for depression prevention	Chair: Phillip Mitchell Panel Members: Charles F. Reynolds III Helen Christensen Michael Berk

ABOUT THIS EVENT

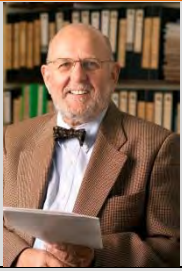
This series of talks and panel discussion will benefit psychiatrists, trainees, neurologists, neuropsychologists and clinical neuroscience researchers.

REGISTRATION INCLUDES

Registration includes attendance at ALL sessions, tea, coffee, refreshments, and afternoon tea.

NON-PSYCHIATRIST RATES AVAILABLE ❖ EARLY BIRD RATES APPLY BEFORE 31 JULY

REGISTRATION  [Click here](#)



Professor Gavin Andrews

Gavin Andrews AO, MD, is Professor of Psychiatry at UNSW Australia at St Vincent's Hospital, Sydney. He is on the ISI Most Highly Cited list for psychology and psychiatry with more than 30,000 citations to his work. His research interests began with stuttering, extended to depression, epidemiology, treatment, classification, cost effectiveness, and now the internet treatment of internalising disorders.



Professor Michael Berk

Professor Michael Berk is currently an NHMRC Senior Principal Research Fellow and is Alfred Deakin Chair of Psychiatry at Deakin University, where he heads the IMPACT Strategic Research Centre. He also is an Honorary Professorial Research Fellow at Melbourne University and Monash University. He is past president of the International Society for Bipolar Disorders and the Australasian Society for Bipolar and Depressive Disorders. He has published over 650 papers, predominantly in mood disorders. His major interests are in the discovery and implementation of novel therapies, and risk factors and prevention of psychiatric disorders.



Scientia Professor Helen Christensen

Scientia Professor Helen Christensen is currently Director & Chief Scientist, Black Dog Institute, UNSW Australia. Her research areas include early intervention and prevention of depression, anxiety, cognitive decline and suicide. She has developed a number of online psychological interventions for depression and anxiety and published extensively in e-health.



Scientia Professor Philip Mitchell

Philip Mitchell is Scientia Professor and Head of the School of Psychiatry at UNSW Australia. His research and clinical interests are in bipolar disorder and depression, with a particular focus on: predictors of the development of bipolar disorder in at-risk individuals; molecular genetics of bipolar disorder; pharmacological and psychological treatments for bipolar disorder and depression; clinical phenomenology of bipolar disorder and depression; and stimulatory therapies for depression (such as transcranial magnetic stimulation and direct current stimulation).



Dr Yael Perry

Dr Yael Perry is a Research Fellow and clinical psychologist at the Black Dog Institute where she conducts school-based research aimed at increasing mental health literacy, reducing stigma and preventing mental health difficulties in young people. Her research interests also include the implementation of evidence-based practices in the community.



Professor Jane Pirkis

Professor Jane Pirkis is the Director of the Centre for Mental Health at the University of Melbourne and an NHMRC Senior Research Fellow. She has conducted numerous studies in the area of suicide prevention, including many on suicide and the media. Recently, her work has focused on the effectiveness of suicide prevention efforts. This has included evaluations of large-scale policy initiatives (e.g. the National Suicide Prevention Strategy) and trials and meta-analyses of specific interventions (e.g. suicide prevention campaigns, structural interventions at suicide hotspots).



Professor Charles Reynolds III

Charles F. Reynolds III MD is the UPMC Endowed Professor in Geriatric Psychiatry at the University of Pittsburgh. He directs the NIMH sponsored Center of Excellence in the Prevention and Treatment of Late Life Mood Disorders and the UPMC/Pitt Aging Institute (www.aging.upmc.com).